

VITRIPIAZZA®

Vitrified Porcelain Paving



Vitripiazza Installation Guide

Italian vitrified porcelain paving

Laying Vitripiazza

A. Planning and Sub base

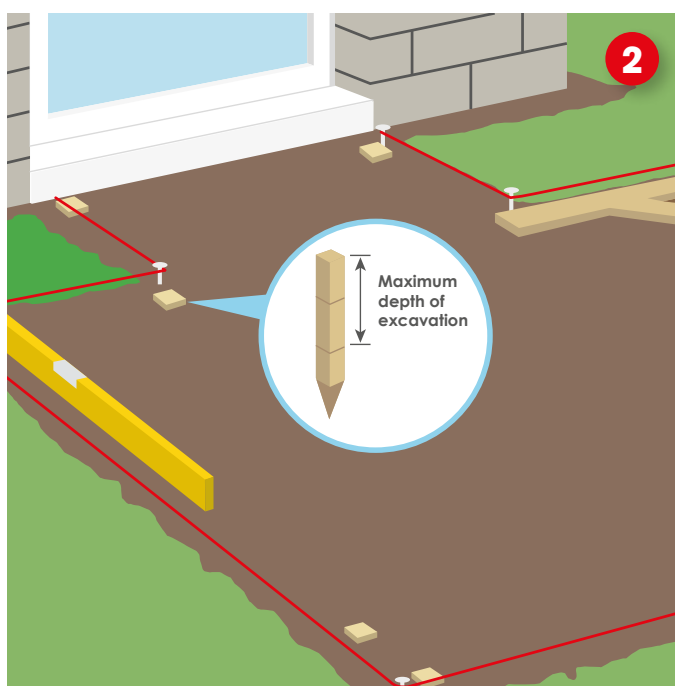
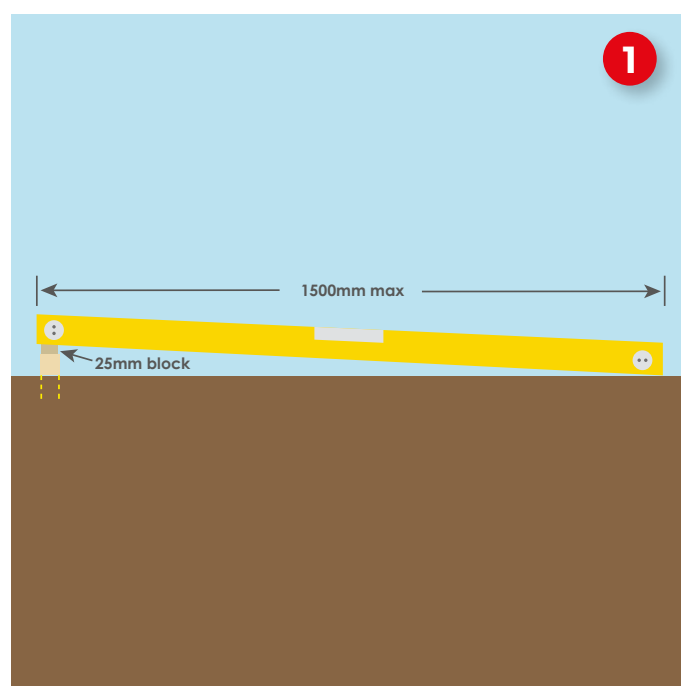


Once you've decided where your patio is going, draw a detailed plan to scale on graph paper. Put in all the dimensions of the patio area.

Mark permanent fixtures on the plan - the house, walls, fencing and manhole covers. You have to pave around the covers as they can effect the level of the patio. Also mark on trees and large plants.

Staggering paving (like a brickwork finish) or laying a random pattern or project pack with different sized blocks usually means you'll have to cut the flags to get a straight border. See page **07** for cutting advice.

The surface of your patio must be at least 150mm below the damp proof course of the house so rain doesn't bounce off and hit the wall above. Laying directly in front of a waterproof door or patio door is acceptable but seek advice from a qualified builder.



Your patio and any steps must have a gradual slope away from the house to ensure all water drains off. Allow a drop of about 25mm in every 1.5m (**diagram 1**) or alternatively install a drainage channel. Guidance for installing this should be provided by the drainage channel manufacturer.

Vitripiazza can be laid with joint widths as small as 3mm. Do not butt joint or go smaller than this as the jointing compound will not fill these joints properly.

Calculate the area of your patio in square metres. The Vitripiazza brochure and website both show the pack size and the area it covers. Use a single size slab then simply divide the area of your patio by the area covered by one pack to see how many packs you need.

If you are using different sized slabs, please take this into account. If you are unsure please contact your merchant/supplier.

Accurately transfer your plan to the ground with wooden pegs. The use of a builders square and string is ideal.

Mark lines on the wooden pegs to show the depth of working - i.e. the finished level of your hardcore, bedding mortar and the surface of the patio slabs. Make sure the marks for the top surface are level with any existing paving and manhole covers (**diagram 2**). Remember to allow for a gradual slope away from the house when putting in your wooden pegs (**diagram 1**).

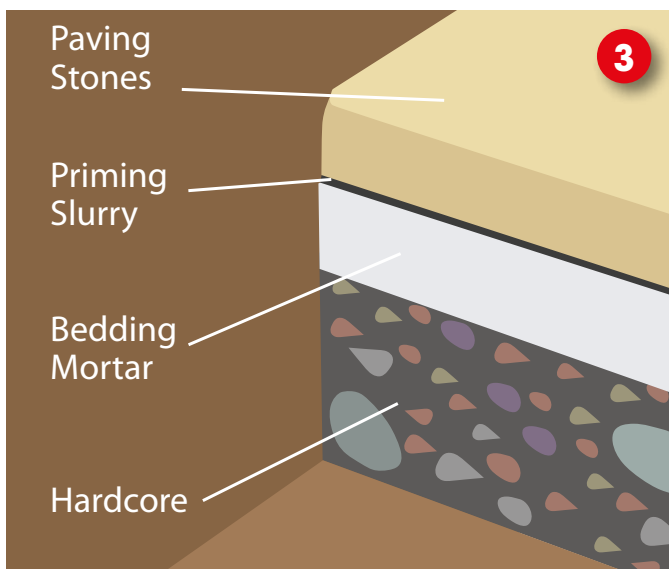
Laying Vitripiazza

A. Planning and Sub base



Remove any turf, plants or paving and dig down to a depth of about 150mm - 200mm to allow for the foundations. To lay a solid base for your paving slabs, you first need a layer of hardcore (MOT type 1 limestone recommended) to a depth of about 100mm to 150mm **(diagram 3)** over the area of your patio.

- Use a rake to distribute the hardcore **(diagram 4)**, levelling out any bumps. We recommend the powered wacker plate to compress the hardcore to give a good solid base **(diagram 5)**. Build up the hardcore in layers using the wacker plate to compact the base fully **(diagram 5)**. The base needs to be compacted tightly to give your new patio or paths a good solid structure **(diagram 6)**.



Laying Vitripiazza

B. Mortar Base



- We recommend a 4 part sand to 1 part cement mortar mix.



Before you lay your slabs, check with a builder's square that the string guide lines are square to the house (**diagram 7**). If not, adjust the guide lines.

Vitripiazza needs to be laid on a full bed of mortar. We recommend a 50mm thick layer of 4 part sharp sand and 1 part cement with sufficient water to make the mortar easy to work with (a wet mix similar to bricklaying mortar)



Laying Vitripiazza

C. Laying Vitripiazza

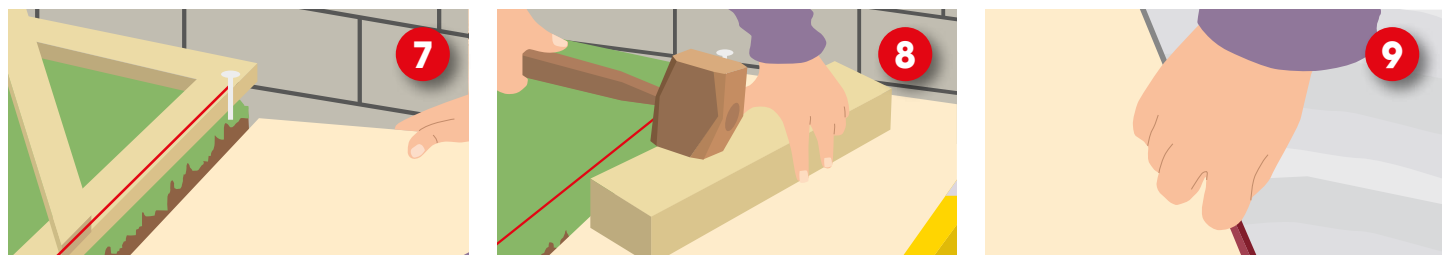
Lay the first slab down against the house at the corner, checking its alignment with the string guideline. It's important that the first slab is positioned accurately and has had its underside coated with Pavetuf Priming Slurry to adhere this to the mortar (See page **05** mixing and using Pavetuf Priming Slurry)

Gently tap the slab to the correct level with a rubber mallet or block of wood and mallet to protect the flagstone (**diagram 8**)

Check the alignment of the slab with a spirit level but don't forget to allow for the slope away from the house.

Carry on until you've laid all the paving slabs using joining spacers (**diagram 9**). The joints need to be a minimum of 20mm deep so score these out as you work. We recommend having a bucket of clean water and sponge handy for wiping off any mortar or slurry from the surfaces as you lay.

Do a final level check to make sure they're all level before allowing to dry for approximately 24 hours.



Take care if you're laying your patio in the summer, make sure the mortar doesn't dry out too quickly as it could crumble. In colder weather protect the drying mortar from rain or frost by covering with polythene sheeting.

Laying Vitripiazza

D. Using Priming Slurry



VITRIPIAZZA®
Vitrified Porcelain Paving

Pavetuf Priming Slurry is a polymer and cementitious slurry, specifically formulated to provide an exceptional bond between a new mortar base and all types of stone and porcelain paving.

- Mix your Pavetuf Priming Slurry with water and follow the instructions on the back of the tub.
- One tub will cover about 12m².
- It's extremely important that this product is used when laying porcelain paving as porcelain is not porous and this product acts as a bonding agent between the mortar and the flag



- Apply the priming slurry to the back of every flagstone when laying, all the back surfaces should be touching the mortar to get a good bond. A good tip is to use a long handle roller, as its easier than a paint brush and keeps you hands cleaner.



We recommend that Vitripiazza is only installed using Pavetuf Priming Slurry and jointed with either our Jointing Mortar or Jointing Compound. If these products are not used for Vitripiazza installation purposes, the integrity of the paved system is outside our recommend guide and will forfeit any technical support.

Laying Vitripiazza

E. Jointing



When the mortar base is dry, your paved area is ready for jointing.

There are two types of Pavetuf jointing products available depending either on your finish and colour preferences or the project circumstances.

A squeegee is an ideal tool to apply both systems working at 45 degrees to the joints making sure all the open joints are completely filled.

**Traditional all
weather products**



**Slurry mortar that
needs a wash off**



All instructions for using these products are on the back of every tub.

We recommend that Vitripiazza is only installed using Pavetuf Priming Slurry and jointed with either our Jointing Mortar or Jointing Compound. If these products are not used for Vitripiazza installation purposes, the integrity of the paved system is outside our recommend guide and will forfeit any technical support.

Laying Vitripiazza

F. Cutting Flagstones



VITRIPIAZZA®
Vitrified Porcelain Paving

Cutting quality Italian porcelain requires a specialist blade and not abrasive cutting discs. To avoid chipping, it needs to be a continuous rim diamond blade. These can be purchased from the Pavetuf range. When cutting, ensure the blade is water-fed for dust suppression and cooling.



After Care

G. Cleaning

Should you wish to clean your Vitripiazza paving, we highly recommend using the Pavetuf General Cleaner. The General Cleaner is just that, a general purpose, everyday use cleaner. It can remove greasy stains and soiling caused by atmospheric and industrial pollution and everyday dirt and grime.

For more details visit www.pavetuf.co.uk/general-cleaner/





VITRIPIAZZA®

Vitrified Porcelain Paving

0330 333 8030

www.vitripiazza.co.uk

Vitripiazza, supplied by: Natural Paving Products (UK) Ltd, Belton Road, Sandtoft, Doncaster, DN8 5SX

Your local stockist